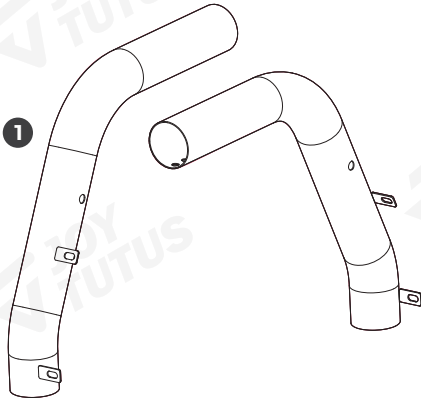


### IMPORTANT

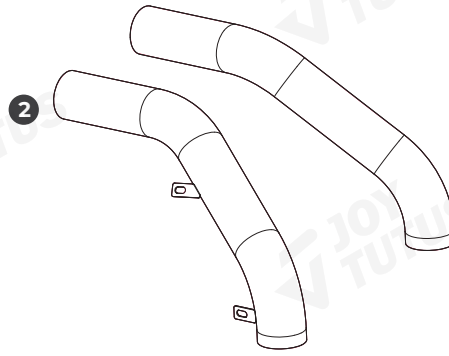
Before installation, please make sure that all accessories are ready.  
(As shown in the picture below).

### PRODUCT INFORMATION

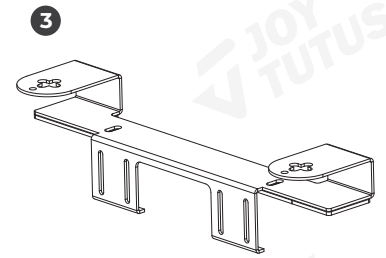
#### Installation Instructions



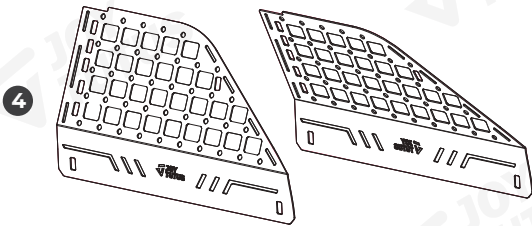
Side Tube 1 (Left and Right pieces) x1



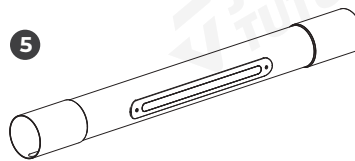
Side Tube 2 (Left and Right pieces) x1



Base x2

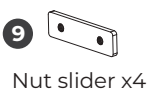


Tactical Board (Left and Right pieces) x1



Top Tube x1

- 6 Rubber Pad x4
- 7 Tube Connector x2
- 8 Lock plate x4



Nut slider x4



M10\*50 screw x2



M10\*35 screw x8



M10 spring washer x10



M10\*D20\*2 flat washer x2



M10\*D30\*2 flat washer x8



M8\*35 screw x20



M8\*20 screw x8



M8 spring washer x28



M8\*D24\*2 flat washer x44



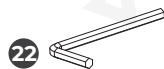
M8 hex nut x16



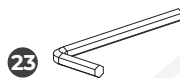
M10 rivet nut x4



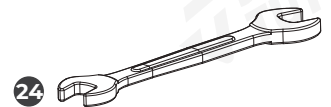
Cap x2



S5 hex key x1



S6 hex key x1



13-15 double-ended open-end wrench x1

### Customer Support

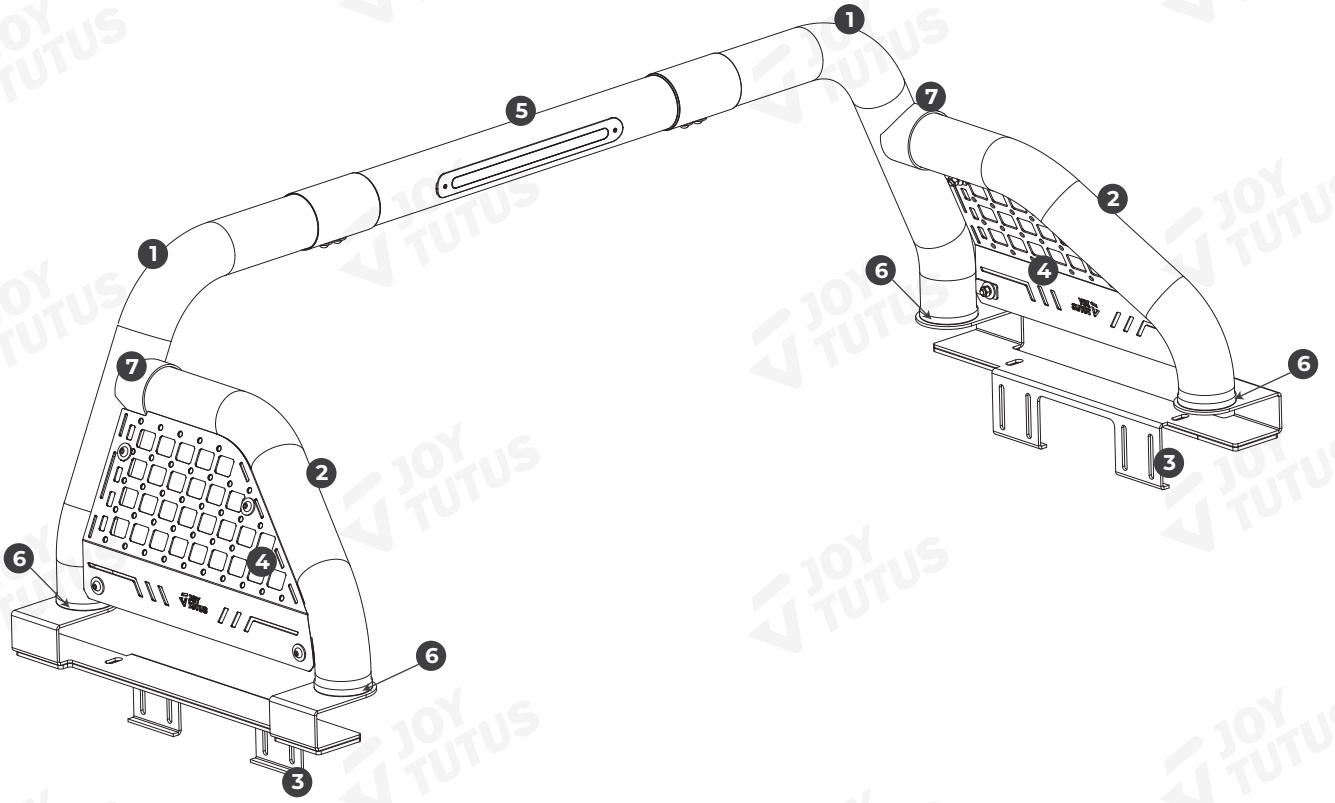


Contact us by email: [service@joytutus.com](mailto:service@joytutus.com)

JOYTUTUS help center:  
<http://support.joytutus.com>

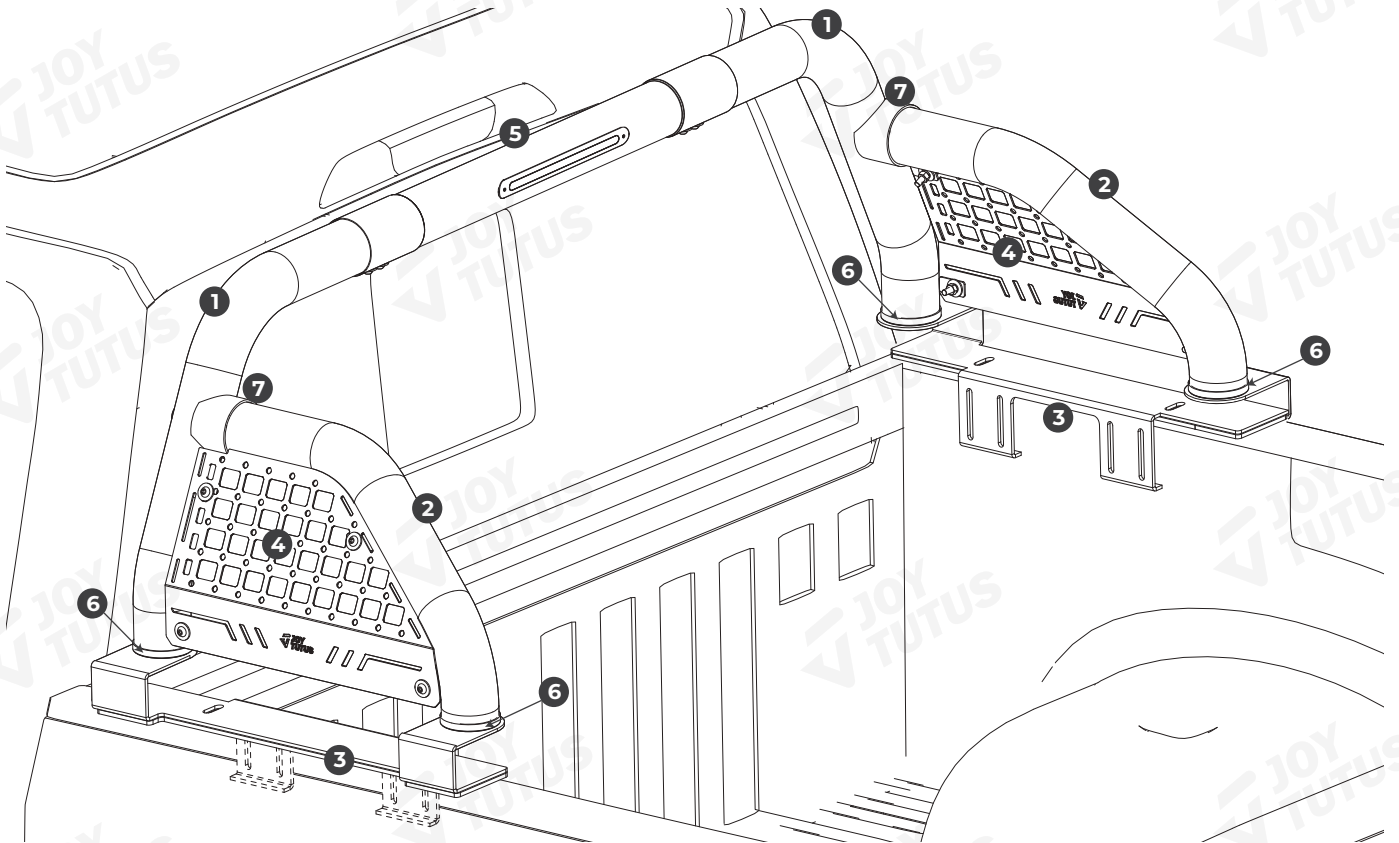


# ✓ INSTALLATION COMPLETION DIAGRAM



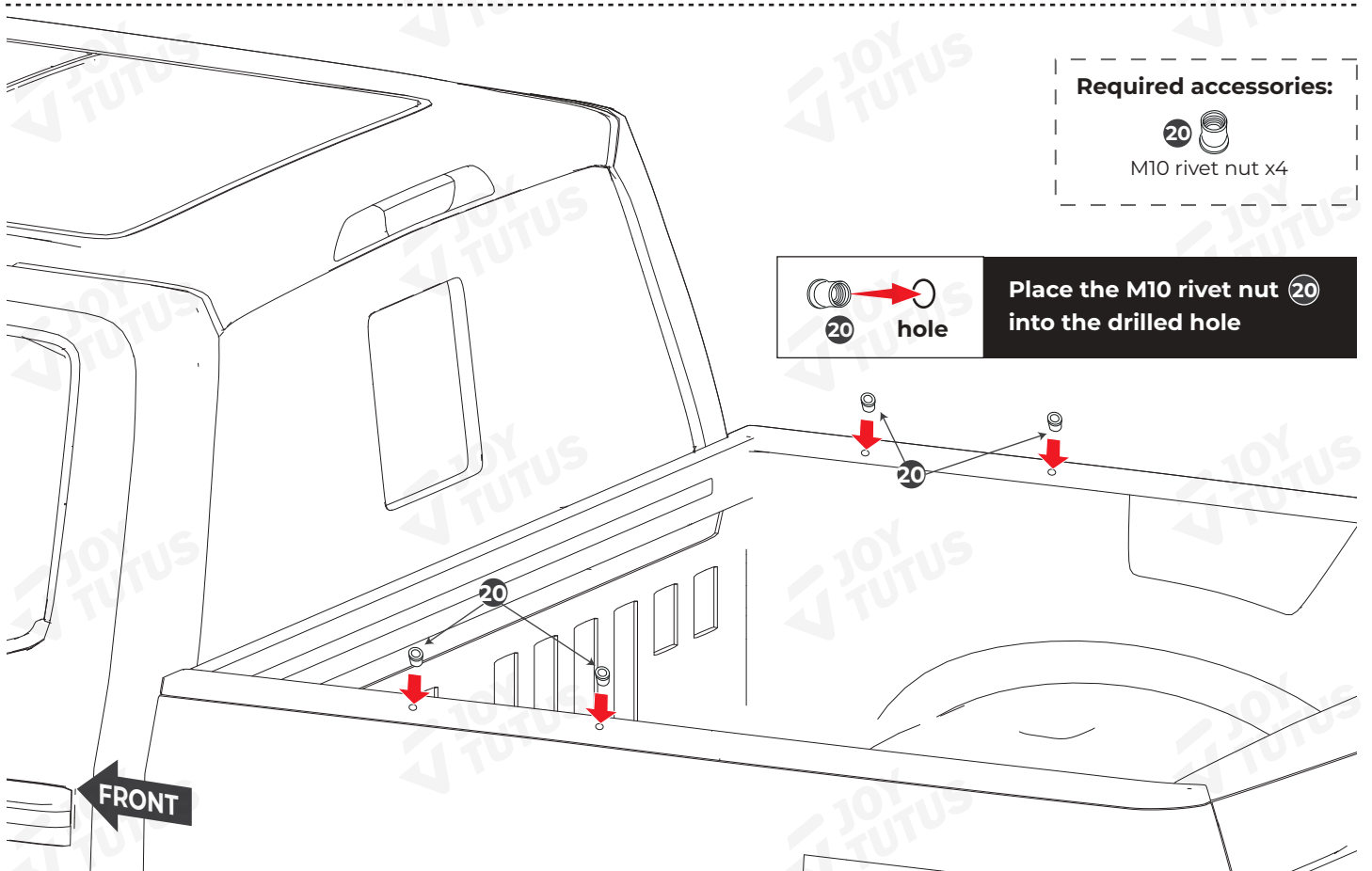
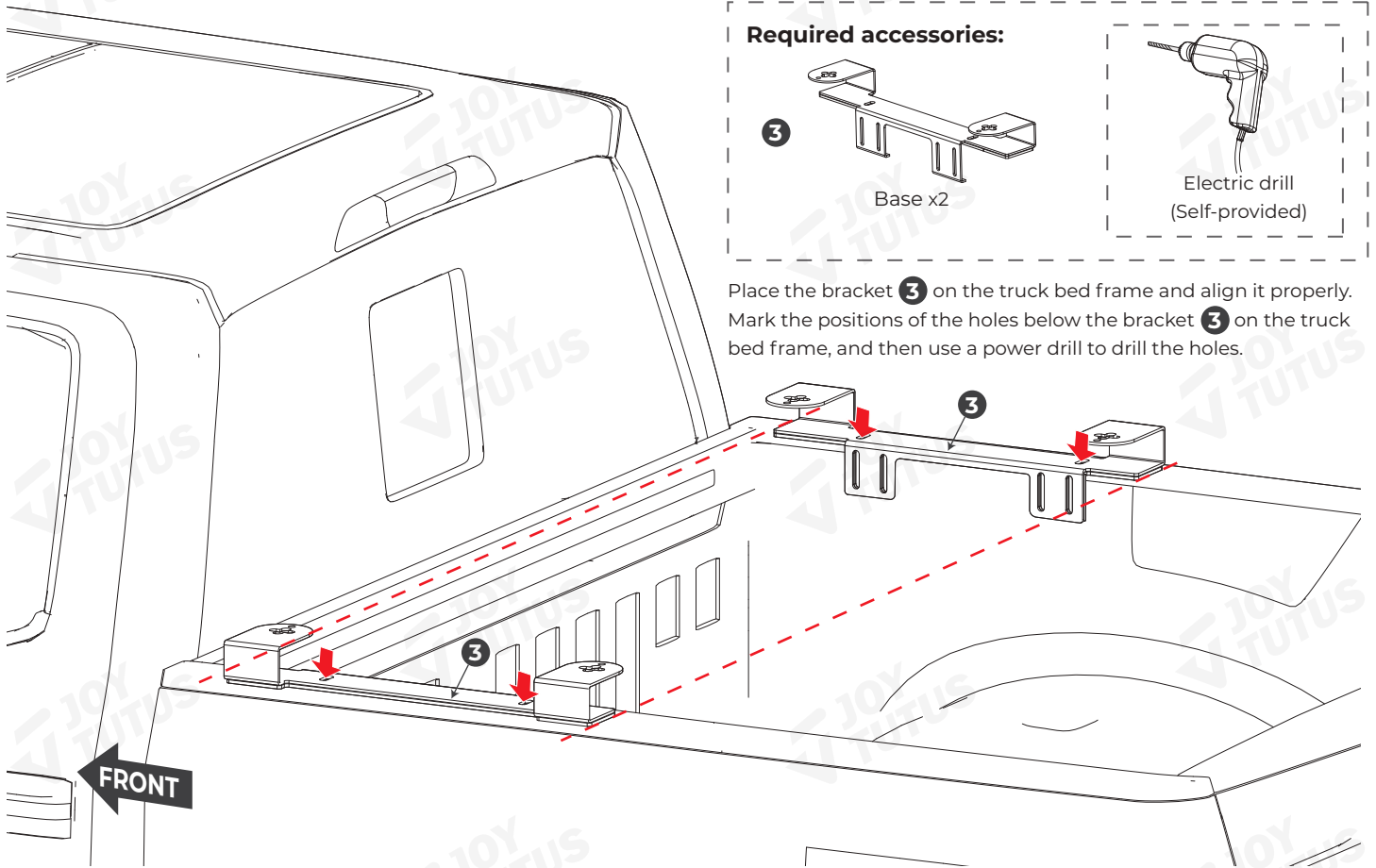
Assembly Completion Diagram

Installation Completion Diagram



## PREPARATORY WORK

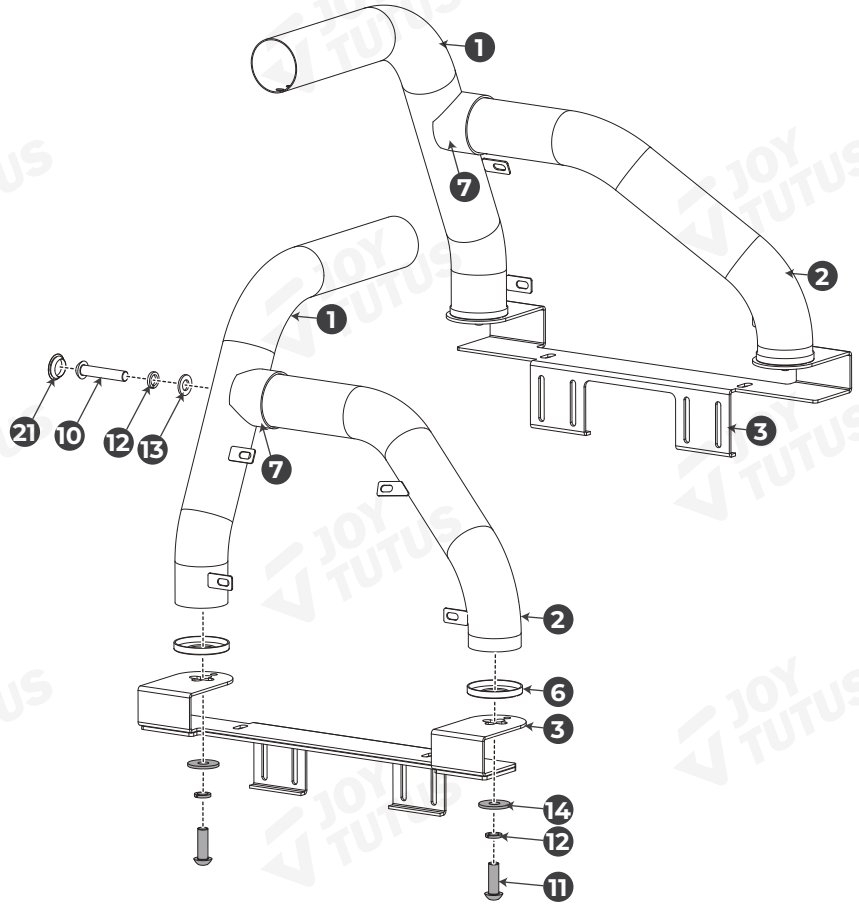
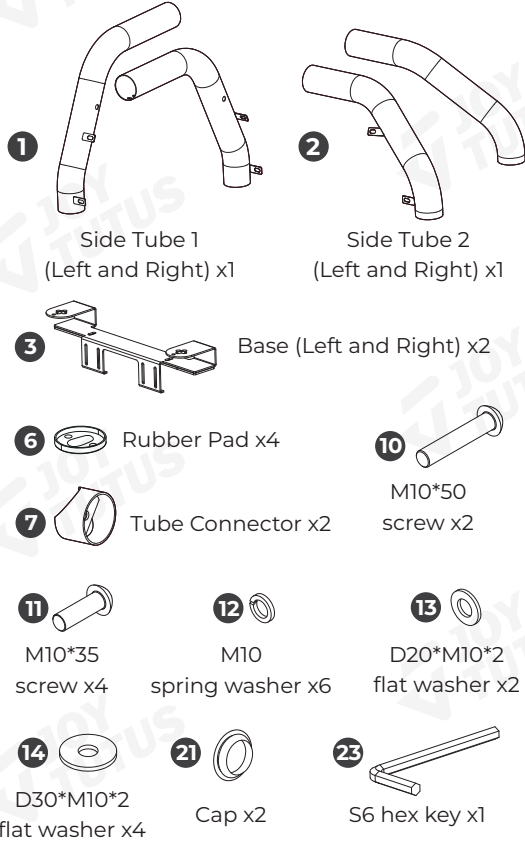
**TIPS:** There are three installation methods: with guide rails, with slide rails, and drilling. You can choose one of them for installation based on your actual situation. This preparation applies to vehicle models that require drilling; other models can disregard it.



# INSTALLATION TIPS

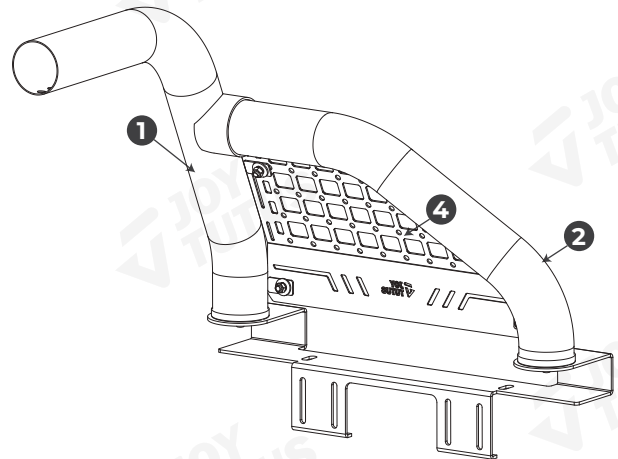
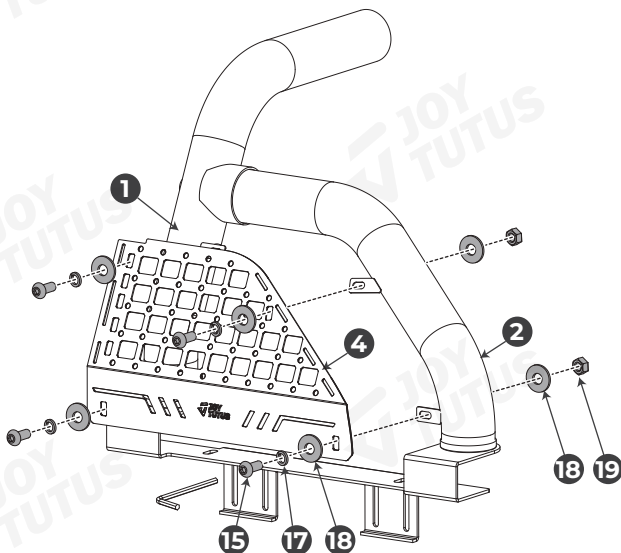
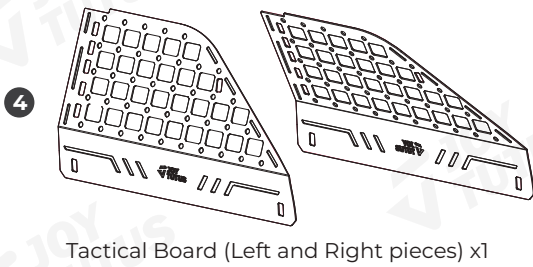
## STEP 1

### Required accessories:



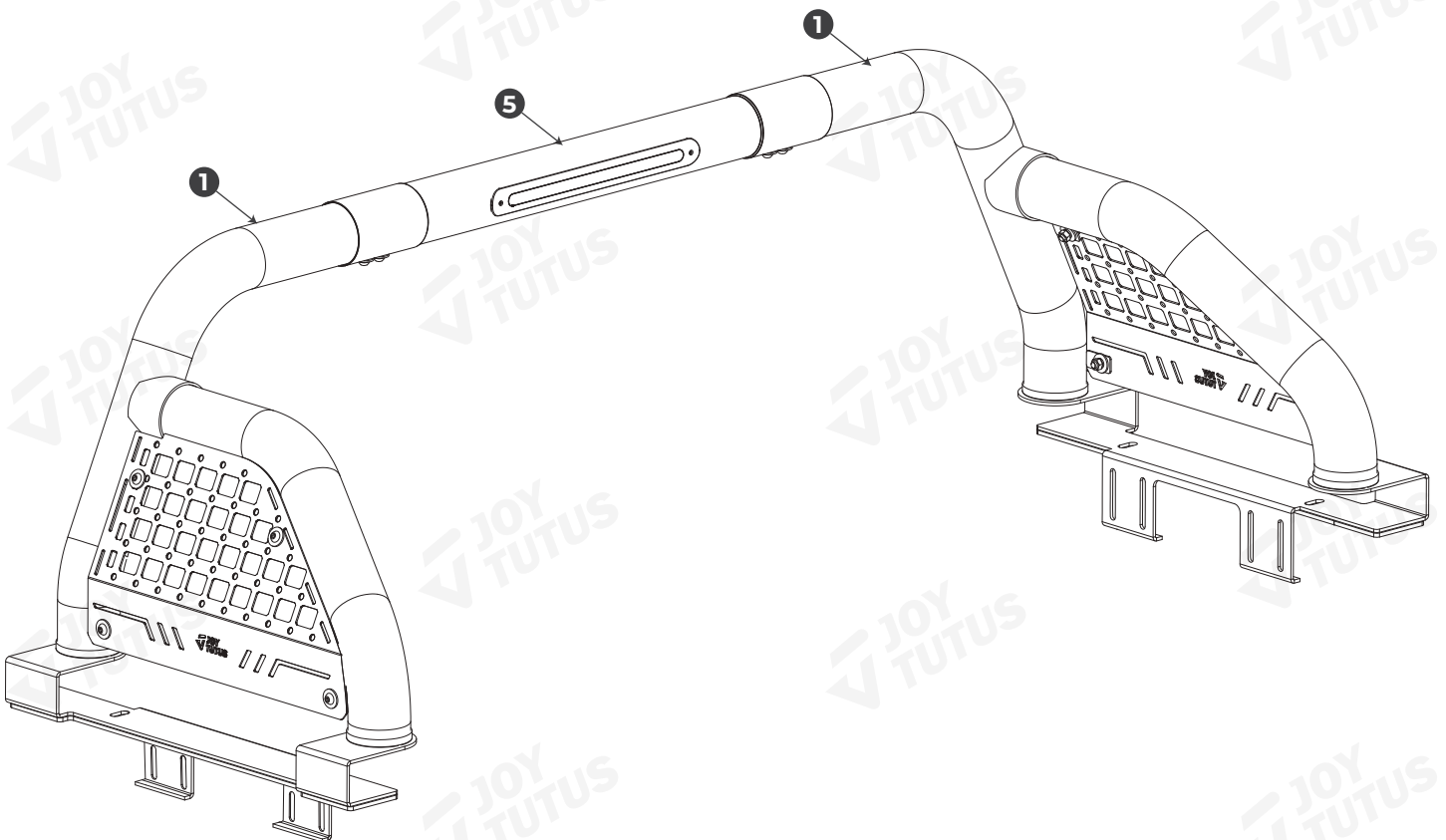
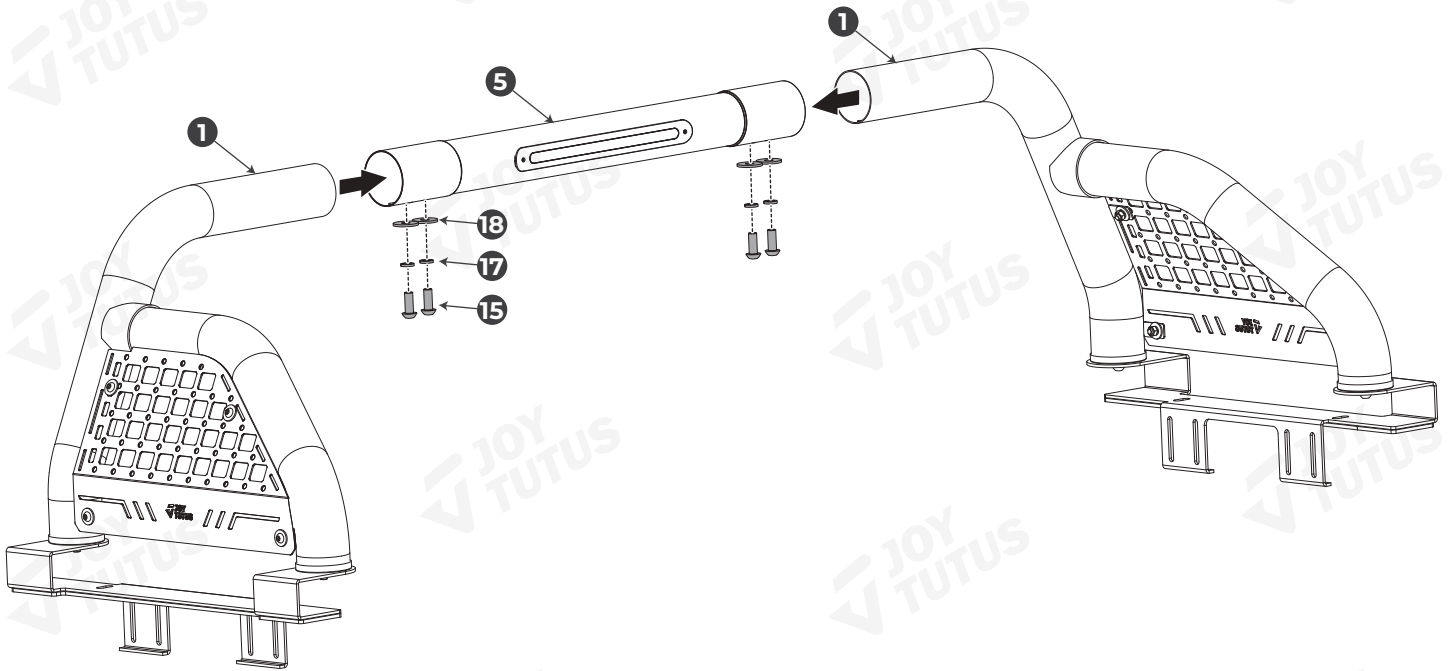
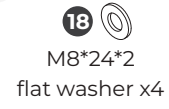
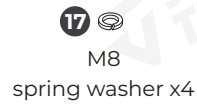
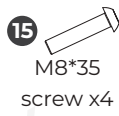
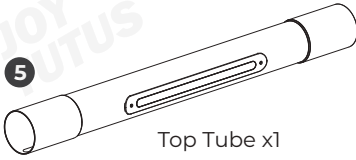
## STEP 2

### Required accessories:



### STEP 3

#### Required accessories:



# STEP 4

## INSTALLATION (drilling)

### Required accessories:



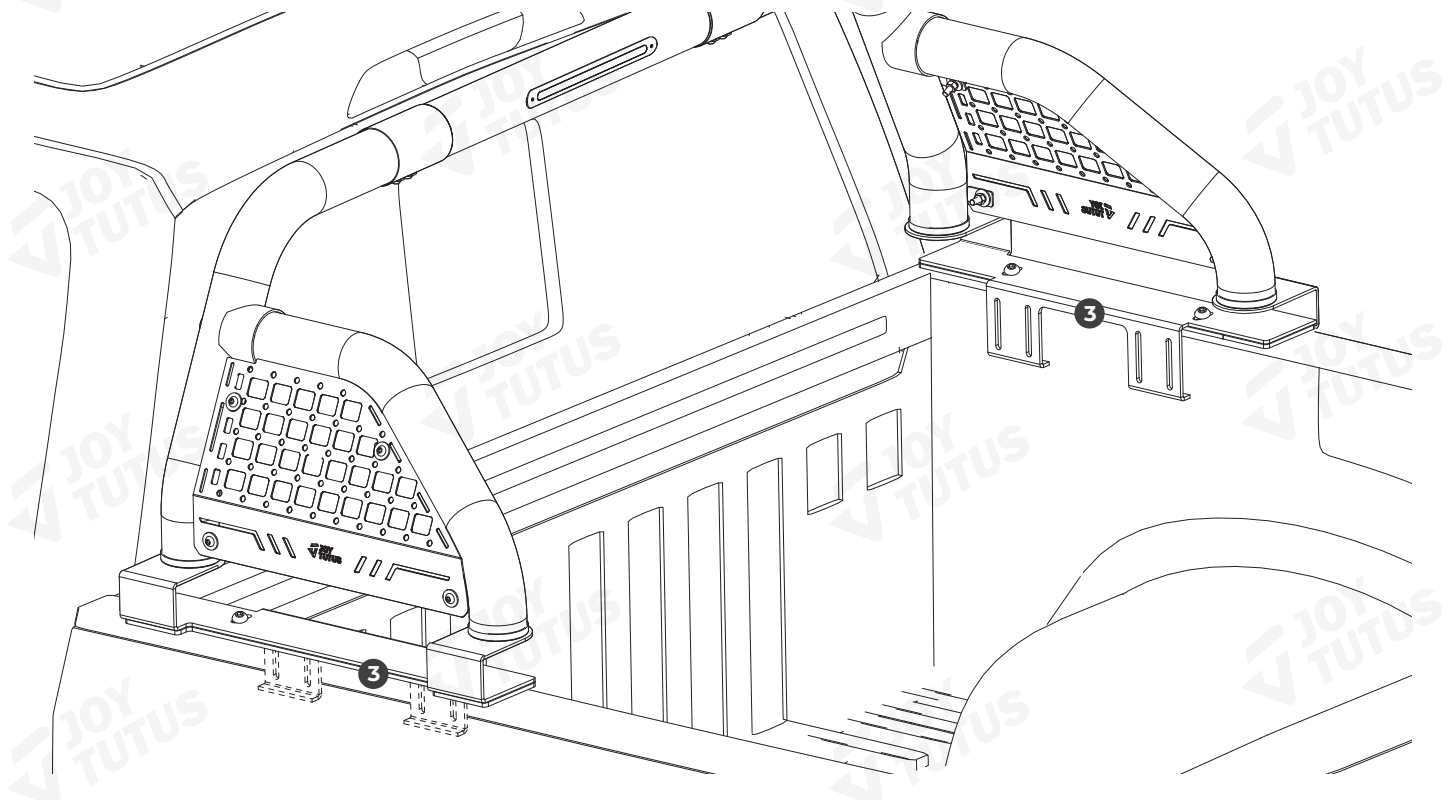
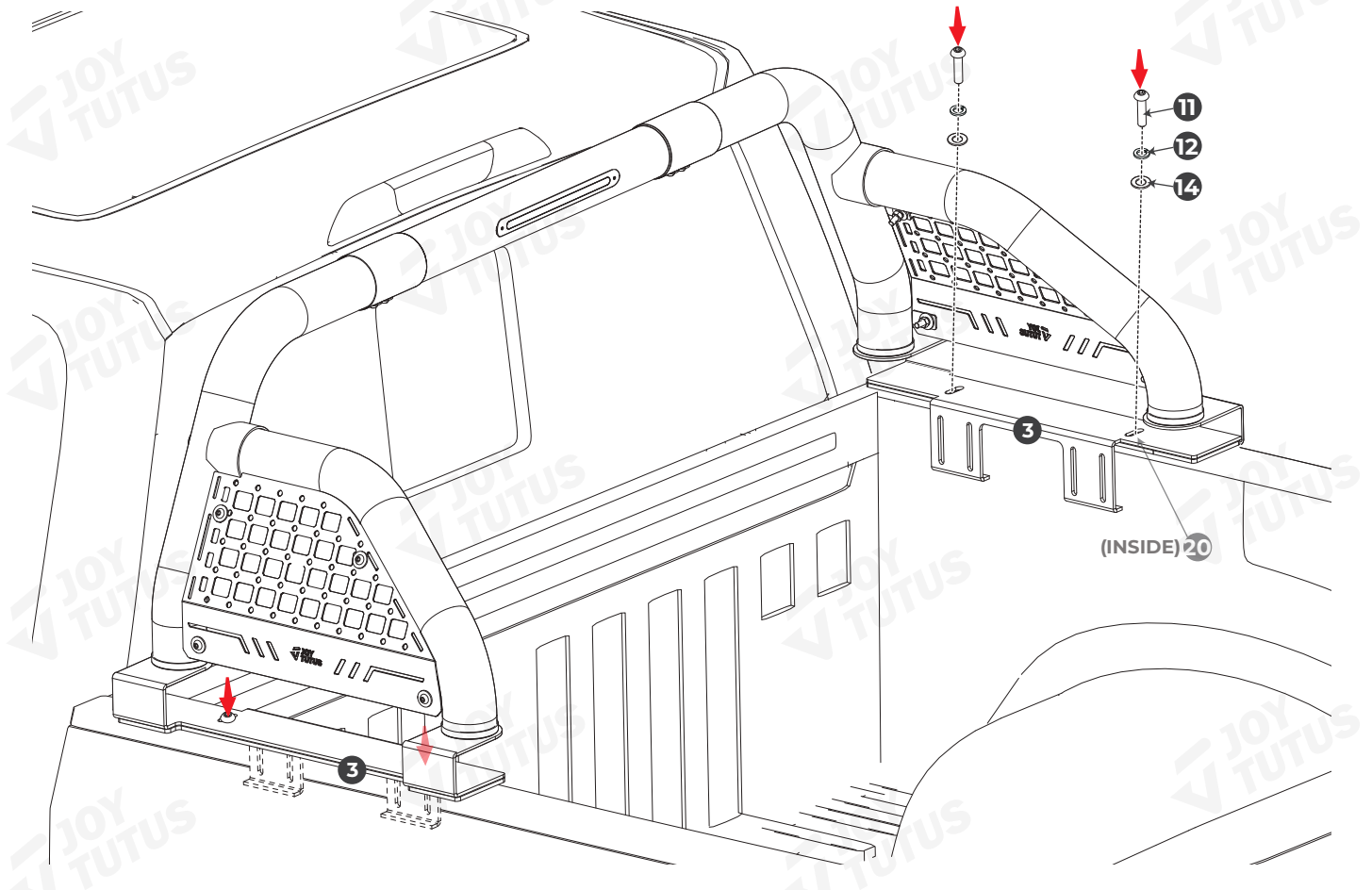
M10\*35  
screw x4



M10  
spring washer x4



D30\*M10\*2  
flat washer x4



## INSTALLATION (with slide rails)

### Required accessories:

9



Nut slider x4

16



M8\*20  
screw x8

17

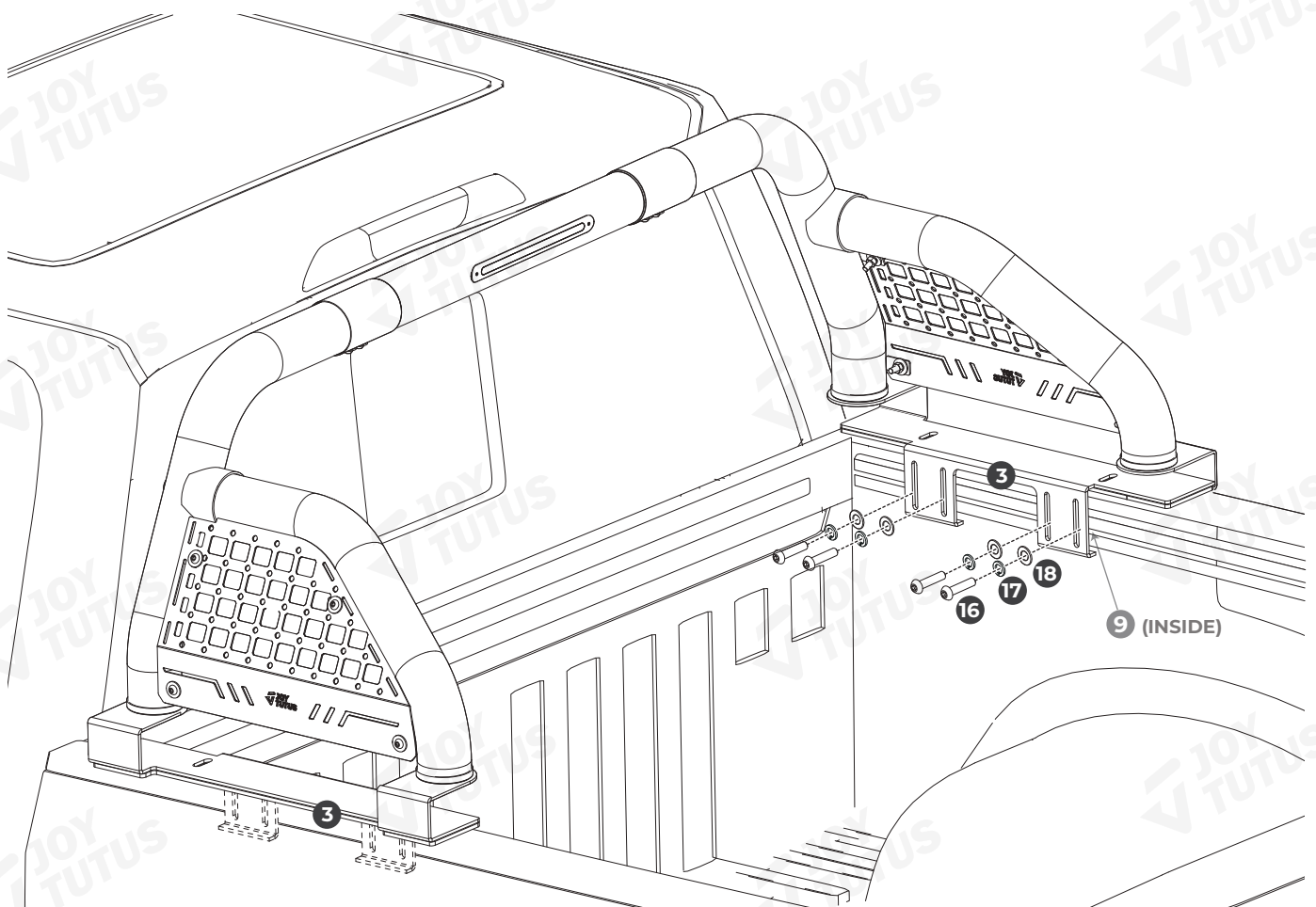
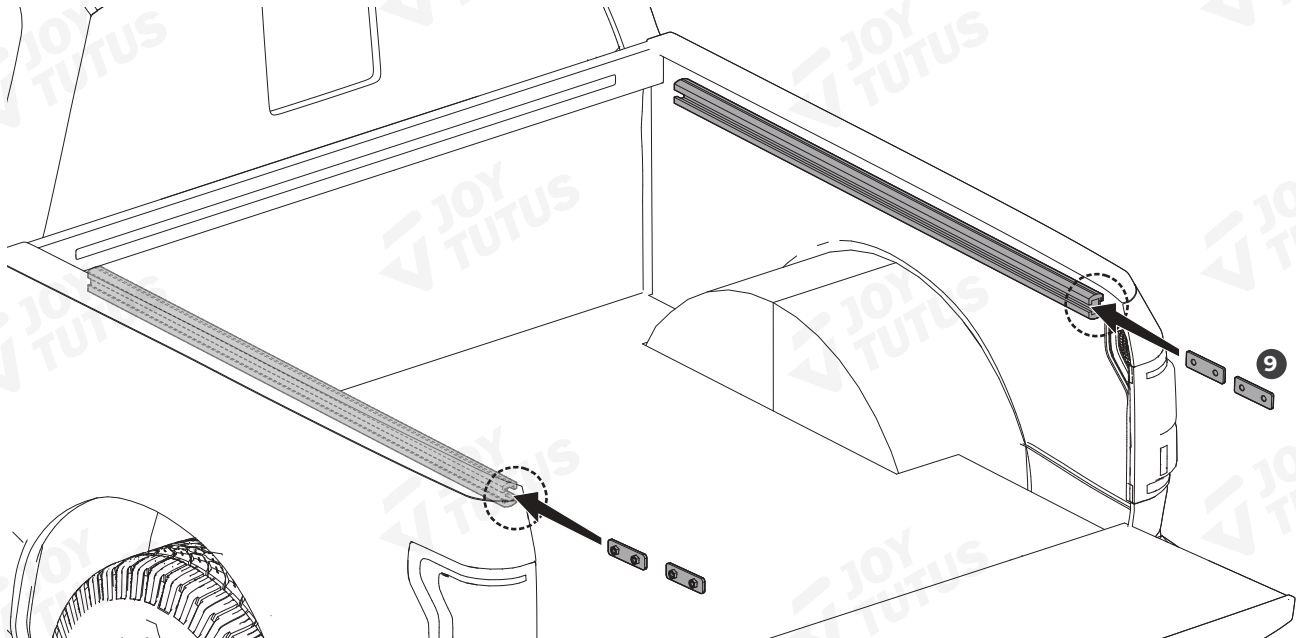


M8  
spring washer x8

18

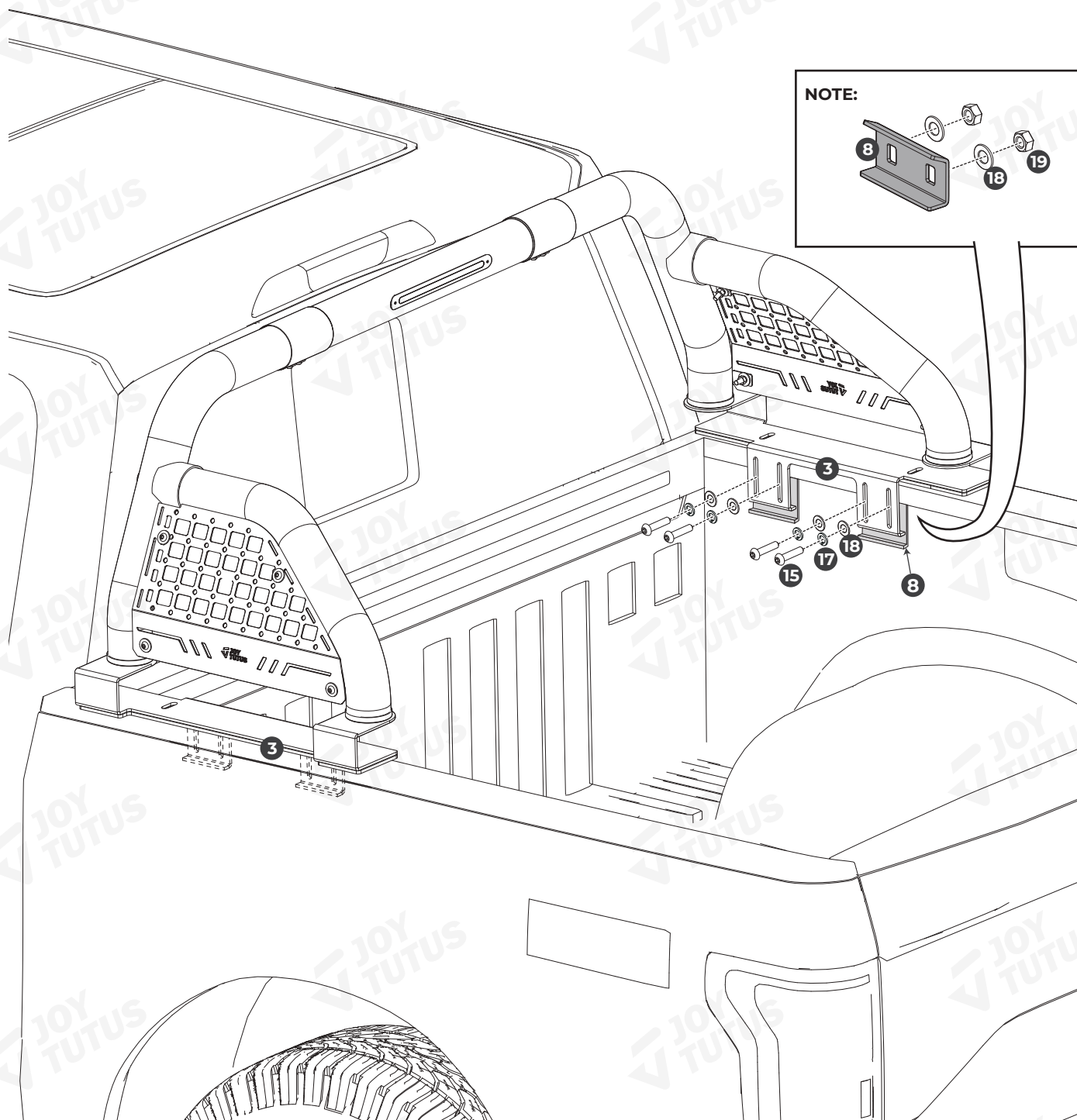
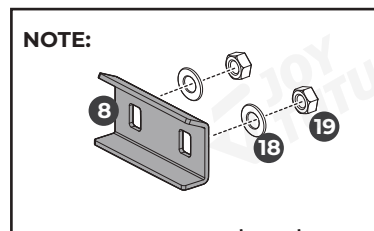
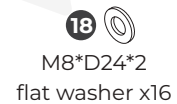
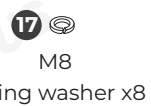


M8\*D24\*2  
flat washer x8



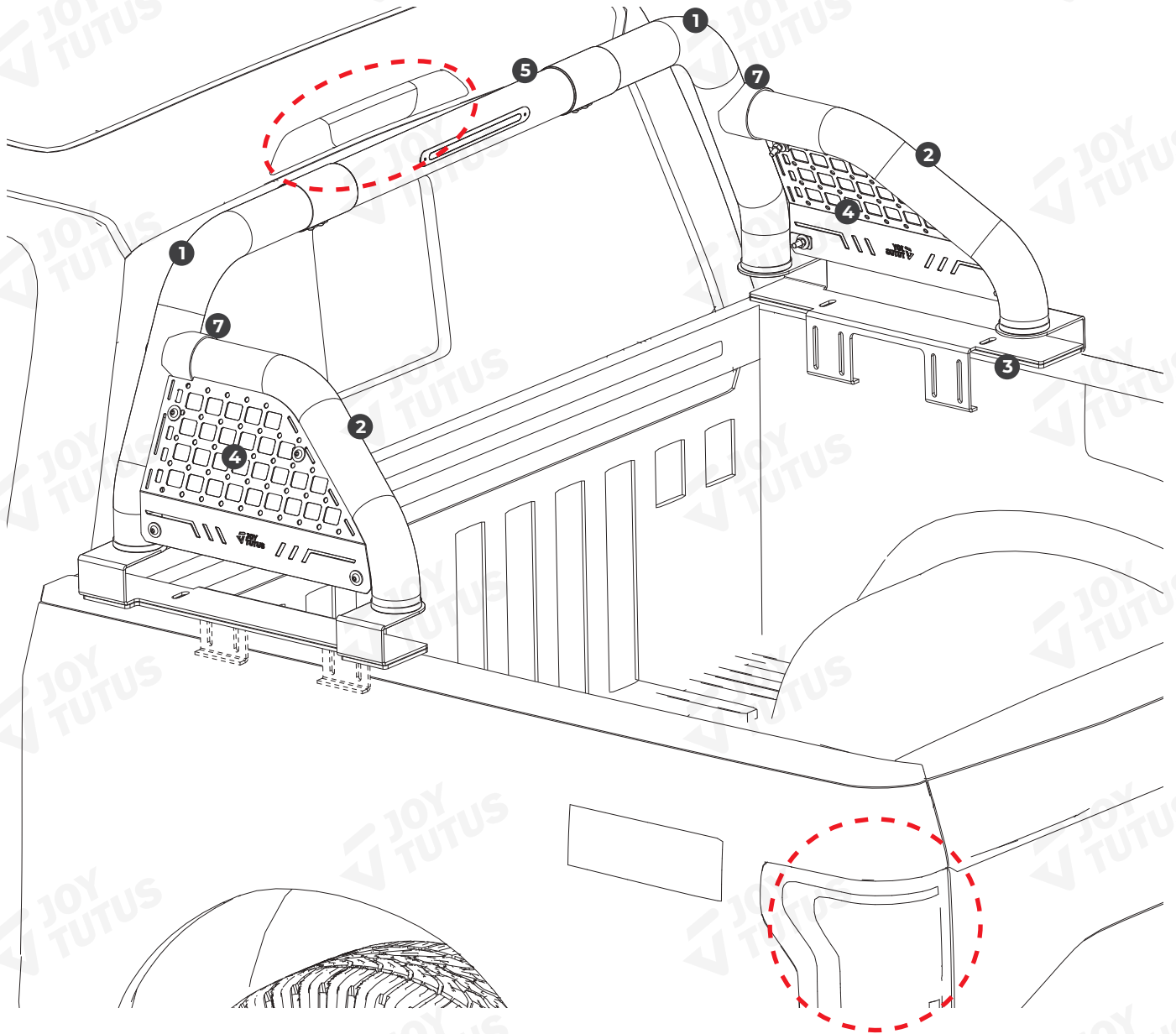
## INSTALLATION (with guide rails)

### Required accessories:

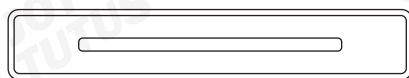


## STEP 5

### Selecting the Wire to Connect to the Tail Light or High-Mounted Brake Light



#### Wiring Instructions



(Length: 2m)

12V 3.5A

1. Disconnect the vehicle's power supply to avoid short circuits or other issues during the wiring process.
2. Locate the tail light harness, which is typically found behind the interior panel at the rear of the vehicle. You can expose the harness by removing the trim panel near the tail lights.
3. Use a test light or multimeter to identify the brake light power wire within the tail light harness. Typically, you can determine the brake light wire by observing voltage changes when the brake pedal is pressed.
4. Once the brake light wire is identified, use a wire stripper to carefully remove the insulation, exposing the metal conductor inside.
5. Use wire terminals to connect the positive wire of the high-mounted brake light to the positive brake light power wire. Connect the negative wire of the high-mounted brake light to a grounding point on the vehicle body, ensuring the connections are secure.
6. Wrap the connection points with electrical tape to prevent leaks and short circuits.