



Installation Tips

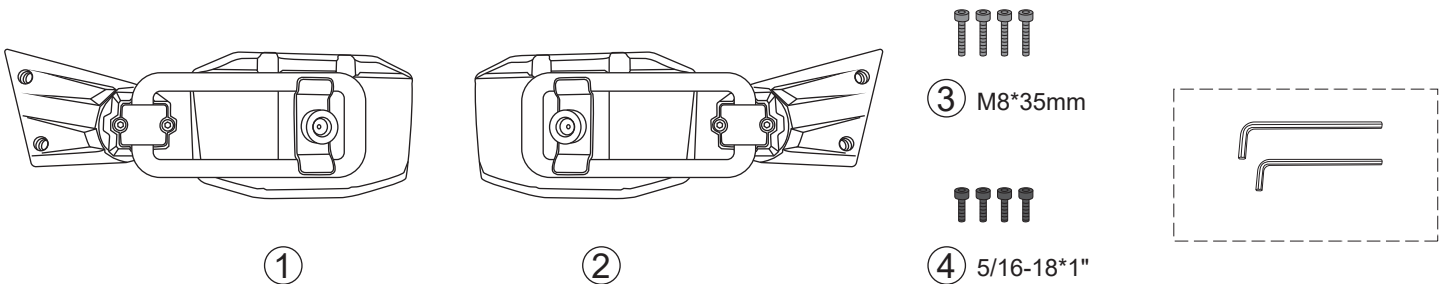
If you have any questions, please feel free to contact us.
Email: qmparts@outlook.com

IMPORTANT

1. Please read the installation instructions carefully before you start.
2. For your safety and to ensure a satisfactory installation, please complete all the installation steps in the order shown below.

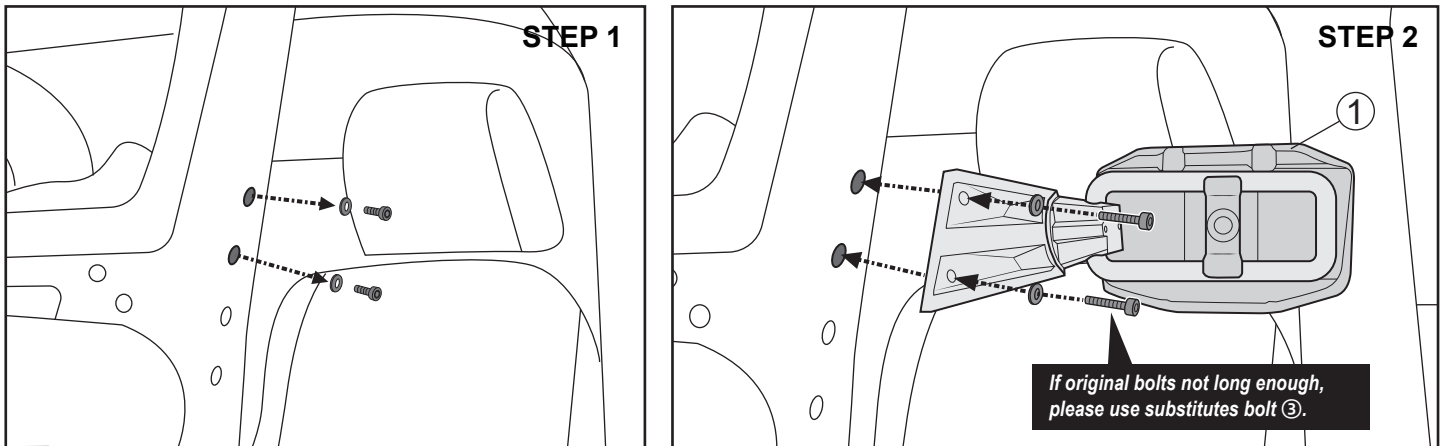
PRODUCT INFORMATION

SKU-A2701-03701



INSTALLATION STEPS

Wrangler JK JKU



STEP 1: Remove two original flush mount torx head bolts and washers just in front of door hinge.

STEP 2: Use the two original bolts and washers just removed to fix the bracket on the flat side.

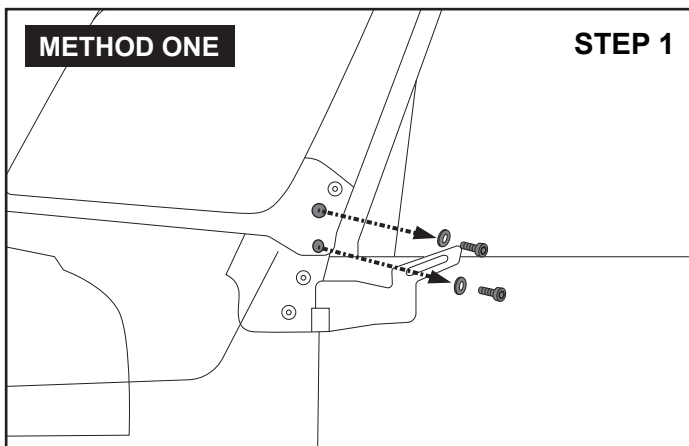
If original bolts not long enough, please use substitutes bolt ③.

STEP3: Repeat steps 1-2 to install the other side.

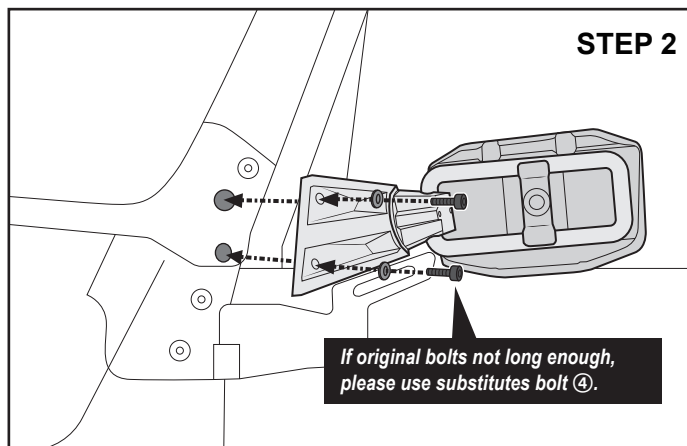
Wrangler TJ

METHOD ONE

STEP 1

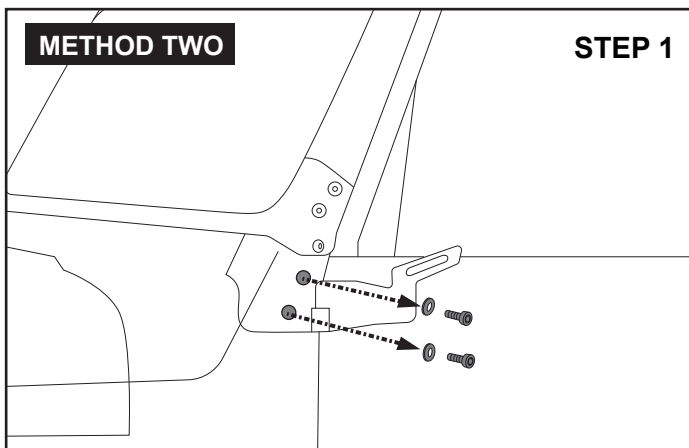


STEP 2

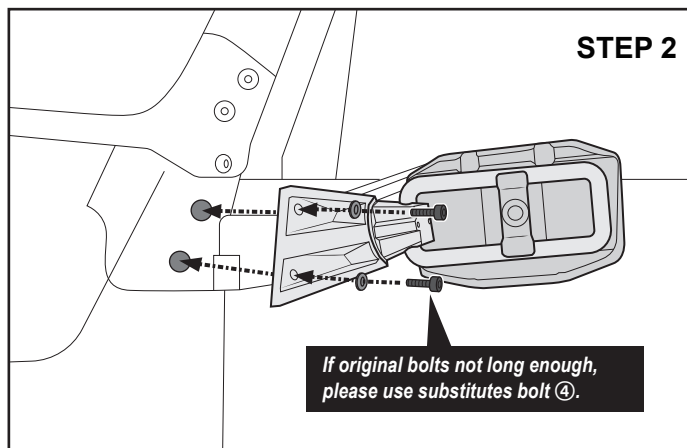


METHOD TWO

STEP 1



STEP 2



STEP 1: Remove two original flush mount torx head bolts and washers just in front of door hinge.

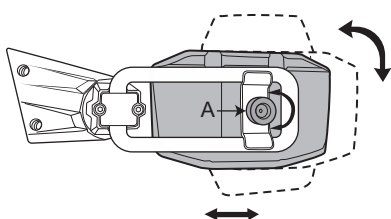
STEP 2: Use the two original bolts and washers just removed to fix the bracket on the flat side.

If original bolts not long enough, please use substitutes bolt ④.

STEP3: Repeat steps 1-2 to install the other side.

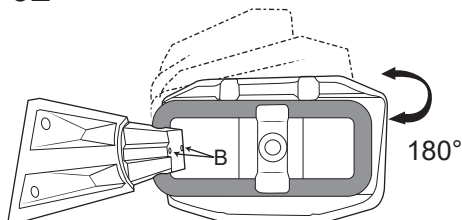
FUNCTION DESCRIPTION

01



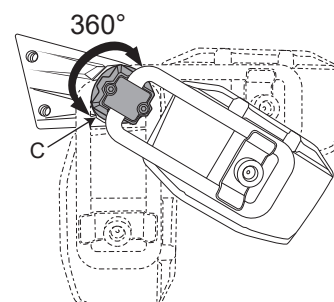
01: Adjust the screw A to change the direction or position of the mirror.

02



02: Adjust the screw B, you can swing frame front and back by 180°.

03



03: You can swing bracket C front and back by 360 degrees.