



Installation Tips

If you have any questions, please feel free to contact us.
Email: qmparts@outlook.com

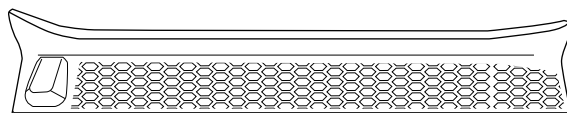
IMPORTANT

1. Please read the installation instructions carefully before you start.
2. For your safety and to ensure a satisfactory installation, please complete all the installation steps in the order shown below.

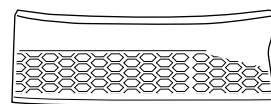
PRODUCT INFORMATION

SKU-A2701-08901

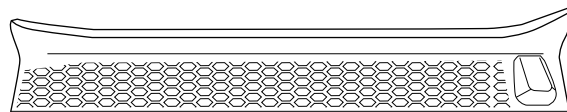
- 1 Front Left
- 2 Front Right
- 3 Rear Left
- 4 Rear Right



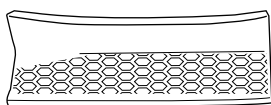
1



3

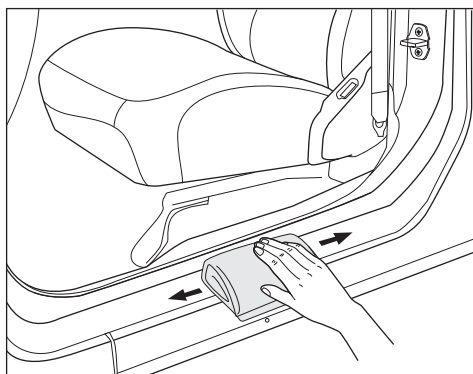


2

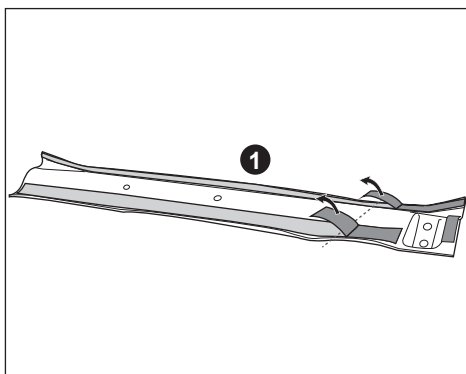


4

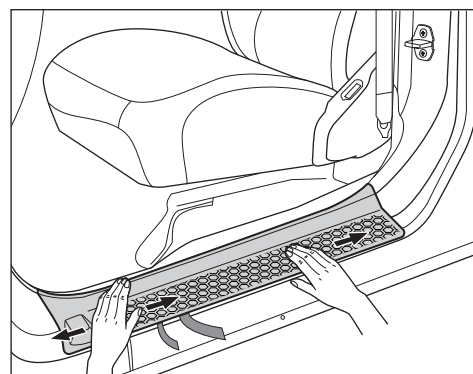
INSTALLATION STEPS



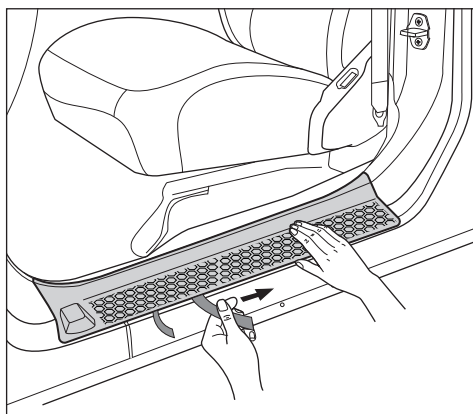
Step 1: Clean the sill and keep it dry no dust, water, oil, etc.



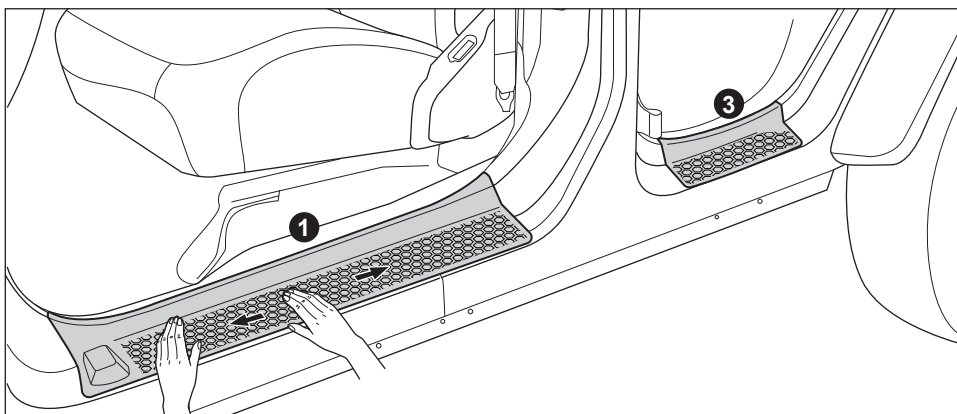
Step 2: Peel partial of tape off, the inside strip go further.



Step 3: Refer to the photo for the placement of the entry guard.



Step 4: Pull off the inside strip tape first, then the other one.



Step 5: Give the guards a push and all installation are complete. Driver side (left) entry guard in the final installed position.