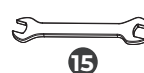
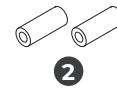
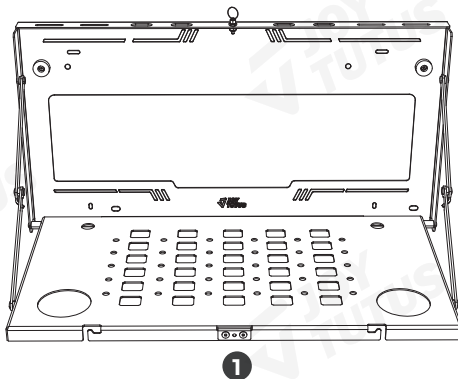


### IMPORTANT

Before installation, please make sure that all accessories are ready. (As shown in the picture below).

### PRODUCT INFORMATION

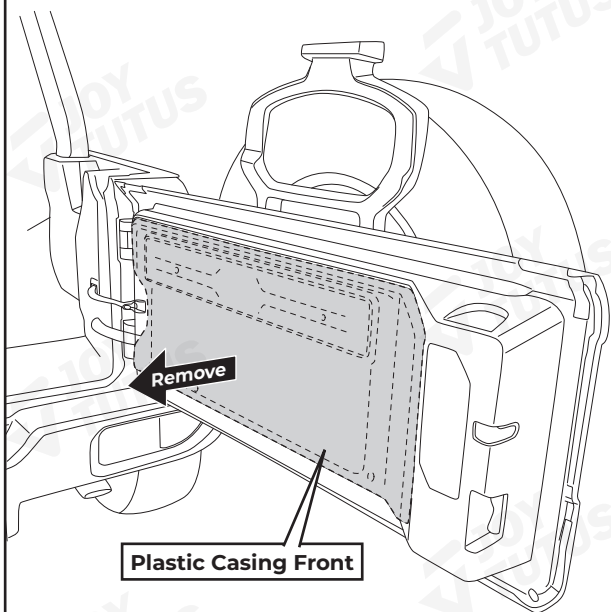
- |    |                         |    |
|----|-------------------------|----|
| 1  | Tailgate table bracket  | x1 |
| 2  | Long sleeve             | x2 |
| 3  | Short sleeve            | x2 |
| 4  | T-screw                 | x4 |
| 5  | Double-pass hex nut     | x4 |
| 6  | M6*35 screw             | x2 |
| 7  | M6*50 screw             | x2 |
| 8  | Large flat washer       | x4 |
| 9  | Small flat washer       | x8 |
| 10 | M5 locknut              | x4 |
| 11 | Self-adhesive EVA foam  | x1 |
| 12 | 2.5mm hex wrench        | x1 |
| 13 | 3mm hex wrench          | x1 |
| 14 | 4mm hex wrench          | x1 |
| 15 | 7mm-8mm open-end wrench | x1 |



### INSTALLATION TIPS

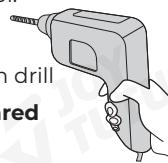
#### METHOD 1 - JL

**STEP 1:** Remove the plastic casing of the door panel.



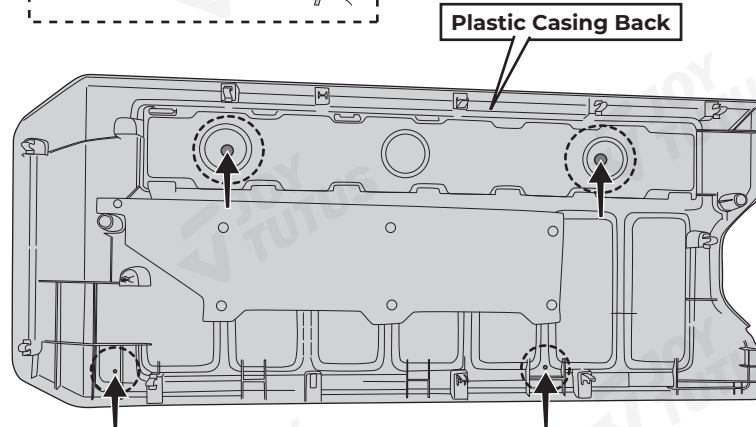
**STEP 2:** On the back of the plastic casing, locate the four screw hole positions shown in the illustration and drill holes with a  $\varnothing 16\text{mm}$  drill bit.

Required tool:

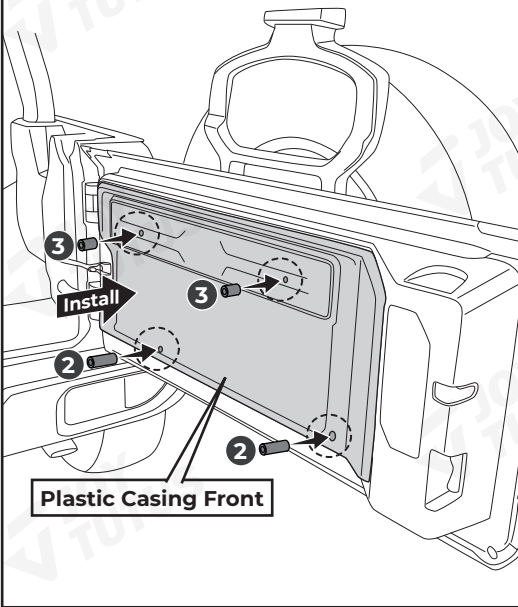


Use a  $\varnothing 16\text{mm}$  drill

(to be prepared by oneself)

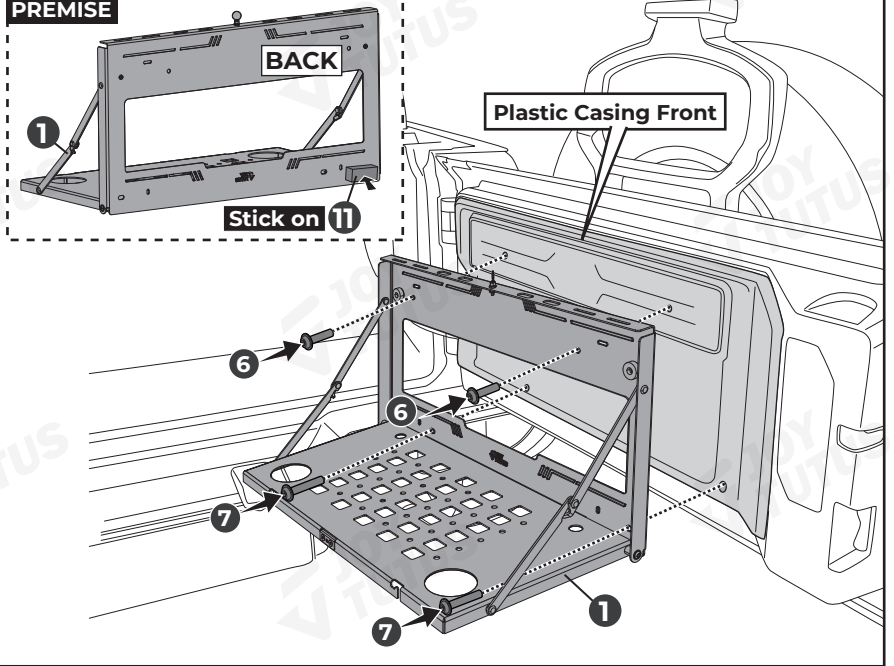


**STEP 3:** First, restore the plastic casing to its original position, then insert sleeves [2][3] into the newly drilled holes in the plastic casing as shown in the illustration.



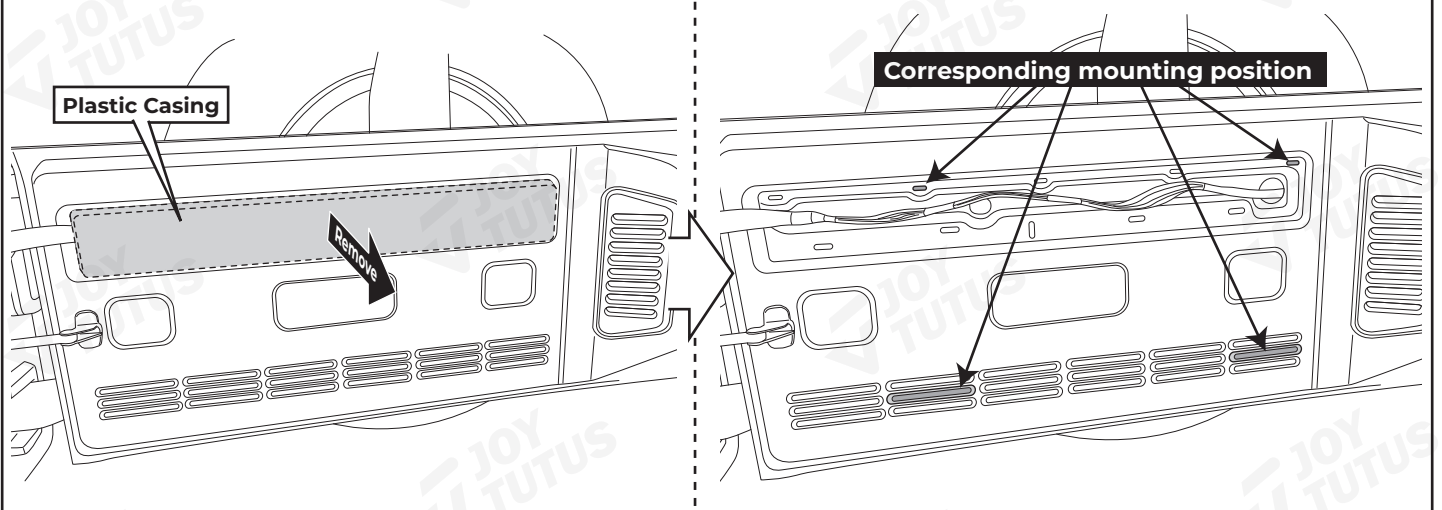
**STEP 4:** Attach EVA foam [11] to the indicated position on the back of bracket [1]. Then align the 4 holes in bracket [1] with the newly drilled holes, and install bracket [1] onto the plastic casing using screws [6][7] as shown in the illustration.

**PREMISE**



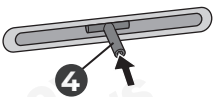
## METHOD 2 - JK

**STEP 1:** Remove the plastic casing of the door panel.

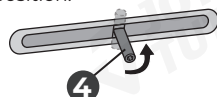


**STEP 2:** As shown in the diagram, use wrench [12] and wrench [15] to install the T-screw [4], nut [5], and washer [8] into the corresponding holes. **(Do not tighten nut [5].)**

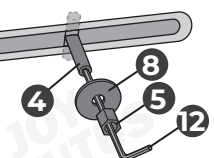
**STEP 2-1:**  
Insert transversely.



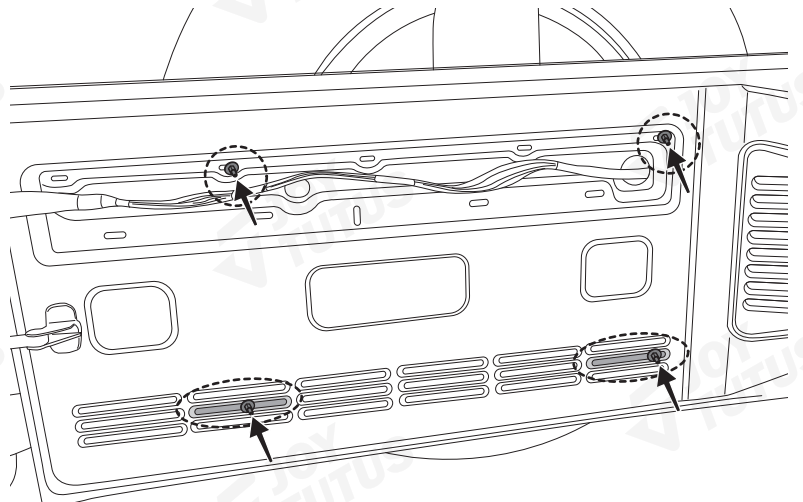
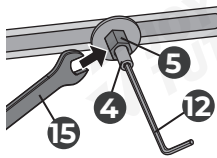
**STEP 2-2:**  
Rotate to a vertical position.



**STEP 2-3:**  
Place [5] and [8] onto [12], and use [12] to support the illustrated position of [4].



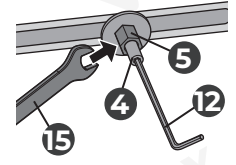
**STEP 2-4:**  
Use [15] to slightly tighten [5].



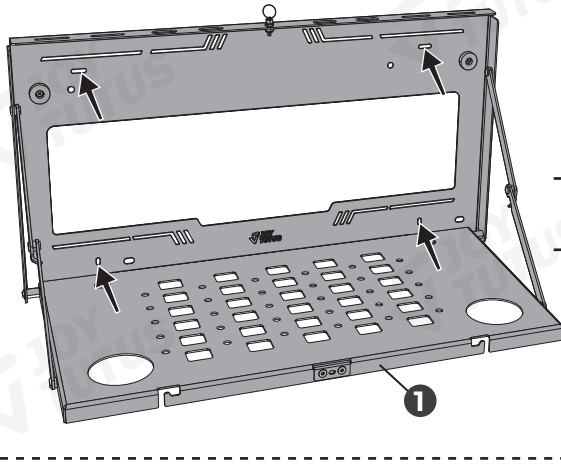
**STEP 3:** Based on the corresponding mounting position of bracket [1], adjust the T-screw [4] left and right to the appropriate position, then tighten the nut [5].

**NOTE:** Before tightening nut [5], check if the closed state of bracket [1] affects any items inside the vehicle. If there is a conflict, avoid it by adjusting the left and right positions of T-screw [4] and bracket [1].

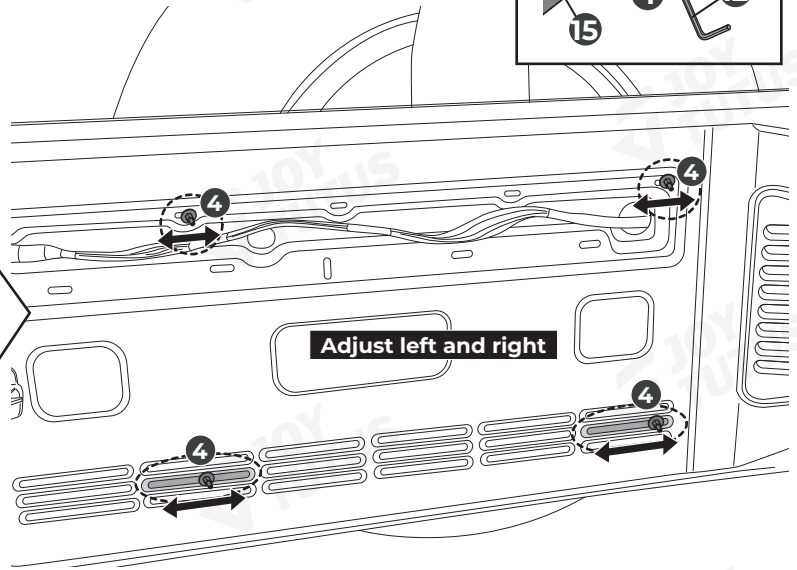
After making the adjustments, tighten nut [5].



Corresponding mounting position



Adjust left and right



**STEP 4:** Align T-screw [4], and as shown in the diagram, use washer [9] and locknut [10] to install bracket [1].

