

### IMPORTANT

Before installation, please make sure that all accessories are ready.  
(As shown in the picture below).

### PRODUCT INFORMATION

- 1/2 Base (driver side) x1
- 3/4 Base (passenger side) x1
- 5 Connecting bracket (driver side) x1
- 6 Connecting bracket (passenger side) x1
- 7/8 Front bending rod + rear bending rod (both sizes are the same) x2
- 9/10 Top bending rod (shorter than 7/8) x1
- 11/12 Tail bending rod x1
- 13 Support rod x1
- 14 Soft top x1
- 15 Locking webbing x2
- 16 Mounting clamp x4
- 17 Steel ring x4
- 18 L wrench x2
- 19 Pin x2

**Installation Instructions**

### Customer Support

Contact us by email: [service@joytutus.com](mailto:service@joytutus.com)

JOYTUTUS help center:  
<http://support.joytutus.com>



### INSTALLATION TIPS



1. Connect the left and right bases together.



2. Install the slot plate at the end of the base.



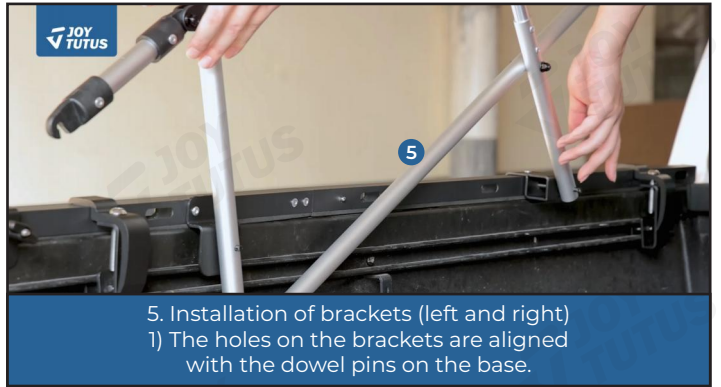
3. Place the base on the truck bed, with both ends corresponding to the respective positions on the truck (left and right bases should be symmetrical).



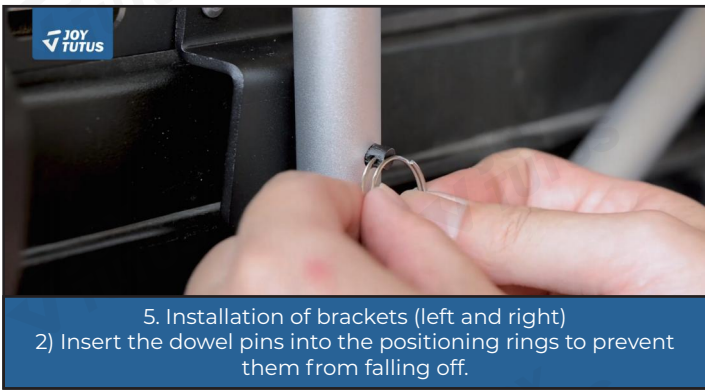
4. Lock the mounting clamp on the corresponding dashed line mark. (NOTE: Do not change the position of the mounting clamp arbitrarily. It may cause interference with the support structure.)



BASE INSTALLATION COMPLETED



5. Installation of brackets (left and right)  
1) The holes on the brackets are aligned with the dowel pins on the base.



5. Installation of brackets (left and right)  
2) Insert the dowel pins into the positioning rings to prevent them from falling off.



5. Installation of brackets (left and right)  
3) Hook and tighten the bolts.



BRACKETS INSTALLATION COMPLETED



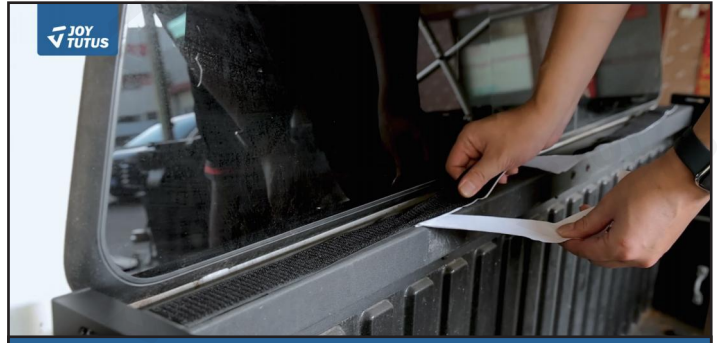
6. Connecting the curved top pipe



6. Connecting the curved top pipe  
Insert the top bending rod ⑨⑩ into the connecting bracket ⑤⑥



7. Tear off the hook & loop protective film



8. Tear off the hook & loop protective film and stick it on the car



9. After all the rods are installed, put the cover on



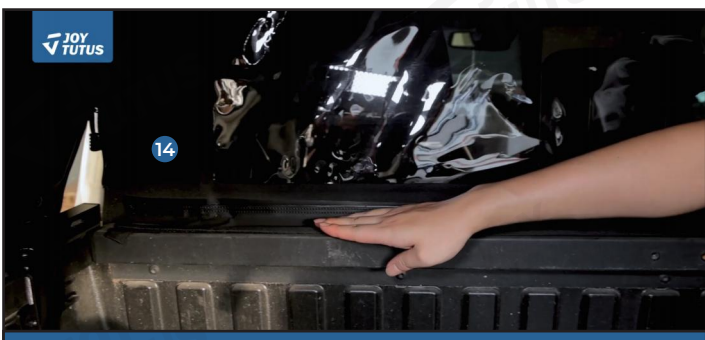
9. After all the rods are installed, put the cover on



10. Hook and tighten the bolts.

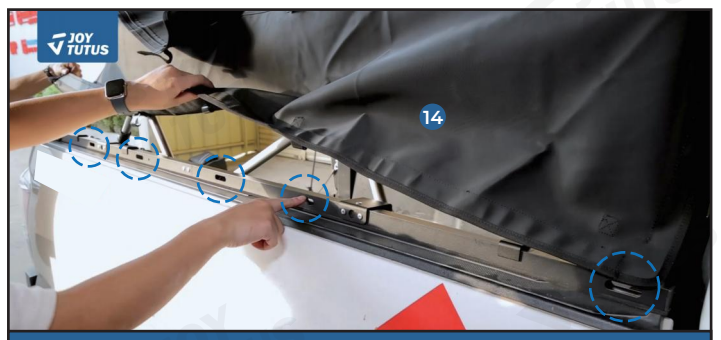


10. Hook and tighten the bolts.



11. Cape Fixing

1) Stick the front of the car hood to the car hood using hook & loop.



11. Cape Fixing

2) Hook the hooks on both sides of the cape into the slots on the base.

